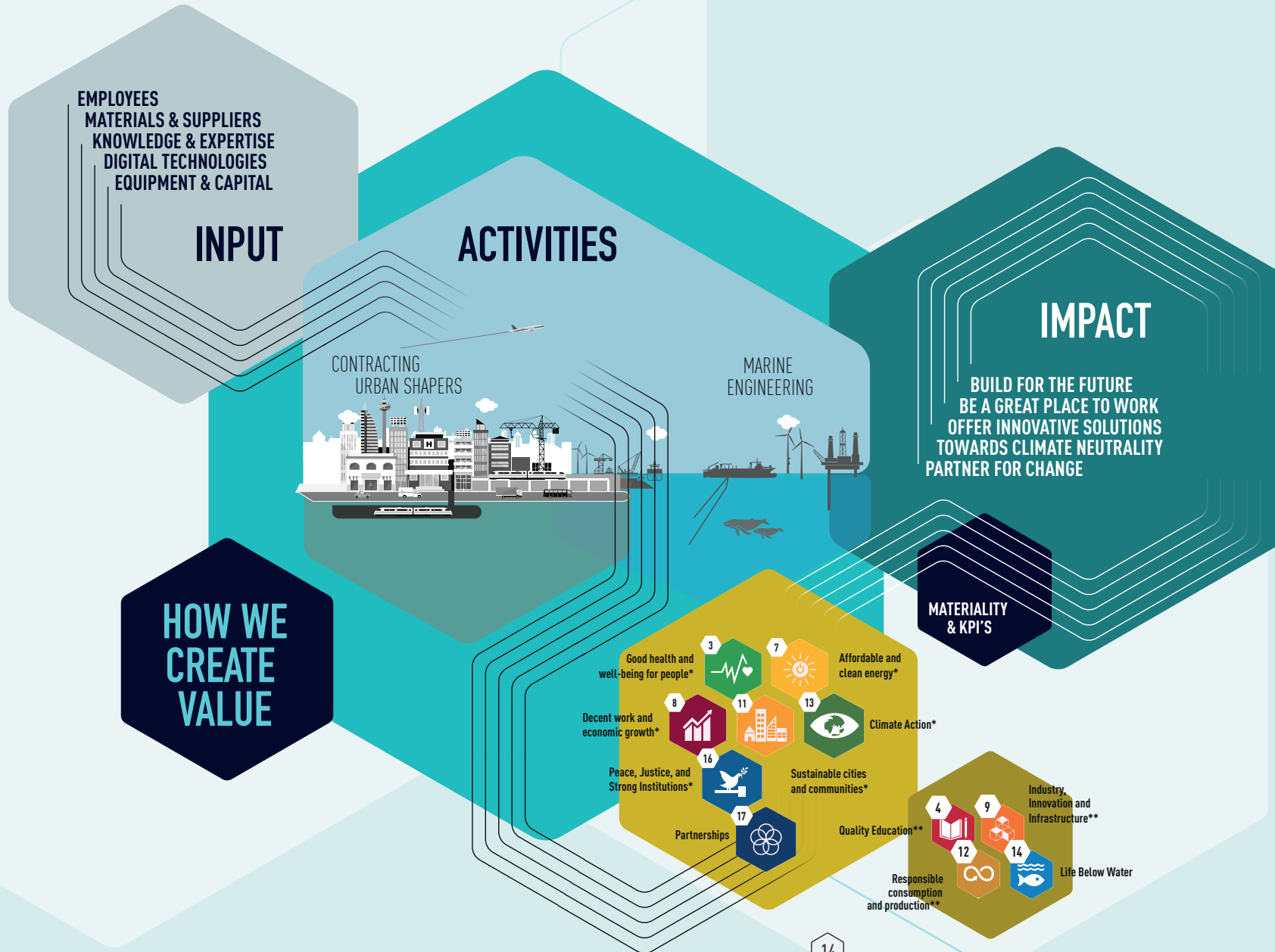


# VALUE(S) CREATION MODEL



## VALUES AND SOCIAL CONTRIBUTION

Real estate development, dredging and marine engineering, construction, technical installations and rail & utilities: the CFE Group is active in three distinct major areas that have in common a major impact on society.

The analysis of the 17 sustainable development goals set by the United Nations made it possible to identify their own priority goals for both DEME and CFE Contracting and BPI. These objectives are built around five important pillars, namely: «Build for the future», «Great place to work», «Offer innovative solutions», «Drive the energy transition towards climate neutrality» and «Create sustainable shareholder value». These 5 pillars correspond to all ESG themes: Environment, People (social) and Governance. Sustainability is central to the strategy of the CFE group.

The continuous dialogue with all stakeholders and the development of solid partnerships support this sustainable approach and form the basis necessary to realize our ambitions.

\* these SDGs are DEME & CFE Contracting and BPI related; more info in the statement of non-financial information

\*\* these SDGs are DEME or CFE Contracting and BPI related; more info in the statement of non-financial information