

Flemish construction company Van Laere sets a new standard in innovation and sustainability



From left to right: Mauro Poponcini; Jan Jambon, Manu Coppens

Zwijndrecht, 26 May 2023 – Van Laere, for over 85 years the partner of choice for developers and public clients for large-scale new construction and renovation projects in Flanders and Brussels, inaugurated its new head office in Zwijndrecht today. The inauguration took place in the presence of many prominent figures, including Minister-President Jan Jambon, who helped with the planting of four trees, symbolising the far-reaching sustainability and innovative character of the building.

"Flanders leads the world in terms of innovation and technology. As Flemings, we work hard every day to maintain and even strengthen this top position. Unfortunately, we are often too modest about this fantastic achievement. Today, once again, Van Laere, a very Flemish company, has shown itself to be a pioneer in technology, innovation and sustainability. Their new headquarters is an example for the sustainable office building of the future. We can truly be proud of Van Laere's work to achieve the Flemish Government's climate objectives step by step." – Minister President of the Flemish Government, Jan Jambon

Helping customers in their climate transition

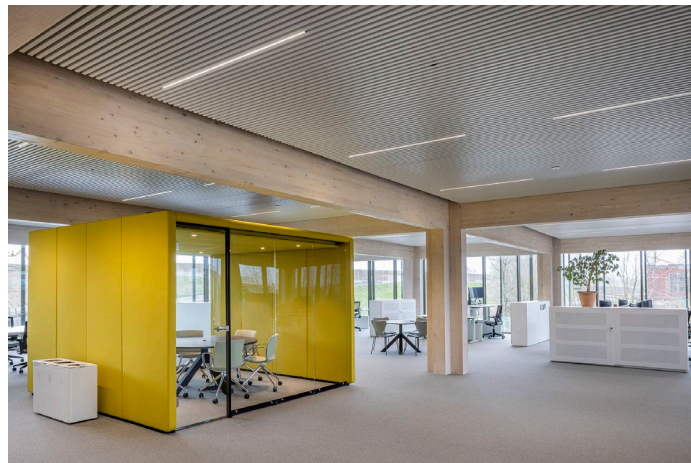
The new head office of Van Laere is truly a state-of-the-art building, which the company is using to show everything that is possible. By so doing, Van Laere wishes to inspire customers and guide them in their choice of sustainable building solutions.

*"We work in a sector that literally shapes the world of tomorrow, and naturally this also entails a responsibility for future generations. With the current challenges, you can't just go on as before, you have to challenge the status quo and focus intelligently on technology and innovation. We want to help customers in this regard." – **Manu Coppens, CEO of Van Laere***

This ambition to support customers in their choice for sustainable building solutions has been reinforced with the launch of Van Laere's new motto: *Creating tomorrow together.*

An example of sustainability

Thanks to the combination of the smart design by POLO Architects, responsible choices of materials and HVAC installations optimised with intelligent software, the CO2 emissions have been reduced to 1/10th compared with a classic office building.



*"As designers, we strive to create engaging buildings that are sustainable and connected to their surroundings. Inspired by the traditional Belgian townhouse, we see this office building as a sequence of rooms aimed at welcoming and bringing people together. A simple and consistent system of wooden porches and cruciform columns makes this possible and contributes to the legibility of the flexibly fillable space and a pleasant office environment. The austere glass volume floats, as it were, in the landscape with its skin of expanded metal as lacework." – **Mauro Poponcini, POLO Architects***

For the supporting structure of its new head office, Van Laere opted for a hybrid structure of concrete and CLT (Cross Laminated Timber).

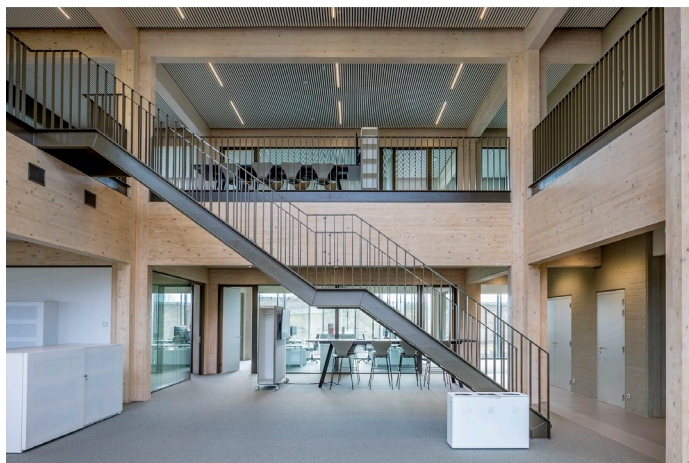
Thanks to this choice of material required to process it, it was possible to reduce the ecological footprint even in the construction phase. Not only could the entire structure be prefabricated, transport and assembly could also be greatly reduced. The facade was clad with latest-generation coated glass that keeps the heat out without losing daylight inside.



In its ambition to support customers in their choice for sustainable solutions, Van Laere relies not only on its own expertise but also on that of its fellow companies within the multidisciplinary CFE Group. Thus, the wooden structure was produced, delivered and installed by sister company LTS of Moorslede.

*"Our timber products are FSC-certified and have excellent insulating properties. Moreover, it is an ideal way to store CO₂. After all, some CLT elements were already assembled in the factory and only needed to be assembled on site, thus reducing transport. In this way, we are doubly sustainable. Firstly, through the use of materials and secondly by reducing transport"- **Jorgen Bornauw, CEO LTS***

Inside the building, the colleagues of VMA were called upon to connect solar panels, heat pumps and ventilation systems to the VMANAGER software that coordinates all flows so that energy consumption is kept to a minimum, resulting in the CO₂ reduction mentioned above.



"We are extremely proud that we have been able to contribute to our colleagues' new home. If we really want to achieve sustainable buildings, we have to look not only at the CO2 emissions from the construction activities and the materials used, but also at the efficiency of the building during its whole life cycle. This is a total package that we can offer customers with Van Laere." – **Guy Wynendaele, CEO of VMA**

--- END ---

Video

We also made a video of Minister President Jan Jambon, Manu Coppens – CEO of Van Laere and Mauro Poponcini – POLO Architects planting 4 trees as a symbol of the sustainable character of the new headquarter of Van Laere. Watch it [here](#).

Press contact

Cathérine Vergaert
Marketing & Communication
Catherine.Vergaert@vanlaere.be
+32 3 252 20 20

About Van Laere

Van Laere is a multidisciplinary class 8 construction and renovation company that specialises in private developments, Public Private Partnerships (PPPs), Design & Build projects and construction team realisations. Founded in 1938, Van Laere is a reliable partner that focuses on quality, service and sustainability. To realise future challenging projects, Van Laere prefers to focus on new techniques, sustainability and circularity in the broadest sense of the word. Together with its subsidiary Arthur Vandendorpe, the company is part of the listed multidisciplinary CFE Group.

www.vanlaere.be

About CFE

CFE is a multidisciplinary group active in Belgium, Luxembourg and Poland, in 4 activity sectors with strong growth potential, because they have the power to shape tomorrow's world: real estate development, multi-technology, construction and renovation and sustainable investments. With a turnover of 1,125 million euros, more than 3,100 employees and an extensive experience and expertise acquired since its foundation in 1880, the CFE group has the ambition to challenge the status quo and to create positive changes by successfully addressing environmental and societal challenges for the well-being of future generations. The CFE group achieves this ambition by placing sustainability, innovation and respect for its employees at the heart of its strategy and by offering its clients total solutions.

www.cfe.be