



Press release

CFE moves to its new headquarters – Welcome to Wood Hub!



Brussels, 4 December 2023 – CFE proudly announces the opening of its new headquarters, Wood Hub, located at Avenue Edmond Van Nieuwenhuyselaan 30 in 1160 Brussels. This innovative office building, covering 7,300 m², embodies CFE's core values, with a special focus on collaboration, well-being, sustainability, and innovation.

Sustainability and innovation for comfort

For a year now, the entire CFE Group has been united under the same branding and a shared mission to change what needs to be changed for a better future for the next generations. This collaboration becomes even more tangible today as CFE, alongside the subsidiary companies with their headquarters in Brussels, moves into the new headquarters, Wood Hub.



Press release

"We aim to create a community of people who collectively achieve a 'change for good,' both internally and externally. Within the CFE group we want to undertake tangible actions on each level on a daily basis. We apply new procedures on our building sites, we think about the habitat of the future and we develop technological solutions as an answer to the environmental challenges we face. Our mission? To be a conscious and responsible leader in building our common future, step by step. Wood Hub is the actual proof of this commitment.", says **Raymund Trost**, CEO of CFE.

Wood Hub is designed to provide a stimulating and healthy work environment. Thanks to its remarkable performance, Wood Hub could obtain the **BREAAM® Outstanding** certification as well as **WELL® Platinum** certification, ensuring an exceptional working environment.

To achieve these performances, the revolutionary **prefab technology CREE®** was utilized, combining a PEFC-certified wooden structure sourced from sustainably managed forests in the larger region with concrete. This innovative construction method reduces the CO2 emissions of buildings by almost 30%, while simultaneously creating a perfectly insulated building envelope.

In addition, the building is heated and cooled by **geothermal energy** and **heat pumps**, and has **300 photovoltaic solar panels**. This makes Wood Hub almost energy-independent, with a **primary energy requirement** not exceeding **8.59 kWh per m²**. Compared to the current average of 180 kWh/m²/year for office buildings, Wood Hub stands out as an exceptional Nearly Zero Energy Building designed for the future.

"We now have a strong portfolio of highly sustainable buildings that combine sustainable construction materials and advanced energy efficiency. Our belief in this is evident as we set up our own headquarters with the same logic. This is the future, and our own people are at the forefront to experience it," says **Alexander Hodac**, CEO of BPC Group.

A great example of an integrated approach

For the realization of this project, the various subsidiaries of the group combined their expertise. **BPI Real Estate**, a leading real estate developer active in Belgium, Luxembourg, and Poland, was responsible for development and design. Construction was carried out by **BPC Group** in collaboration with **WOOD SHAPERS**, an expert in large-scale prefabricated construction using bio-based materials. **VMA** handled the installation of all technologies, including the VMANAGER software that centralizes all building technologies in one platform. Finally, **BENELMAT** was responsible for the logistics installations throughout the execution period.



Press release

"We have already proven to be a pioneer in sustainable new construction with a strong portfolio in the Benelux and Poland. Wood Hub meets the strictest requirements; the combination of our expertise within the CFE Group results in buildings that stand for many generations to come. However, we will increasingly deploy this integrated approach for large-scale renovations essential to making our cities more sustainable," says **Jacques Lefèvre**, CEO of BPI Real Estate.

Other partners

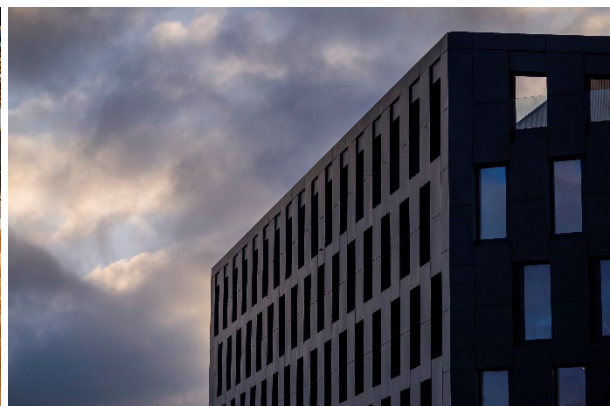
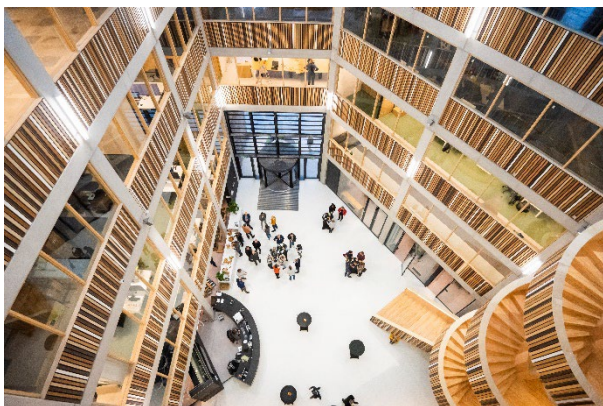
Architects: Archi 2000

Technical studies: Detang Engineering

Stability: TPF Engineering

Certification: B4F (Building For the Future)

Acoustic studies: BAAM



--- END ---

About CFE

CFE is a multidisciplinary group active in Belgium, Luxembourg and Poland in four core activities with a significant growth potential that shape tomorrow's world: real estate development, multitechnics, construction & renovation and sustainable investments. With a turnover of 1,200 million euros, more than 3,100 employees and long experience and expertise gathered since its foundation in 1880, the CFE group has the ambition to challenge the status quo and create positive change by providing a successful answer to environmental and societal challenges to ensure the well-being of future generations. The group realises this ambition by putting sustainability, innovation and respect for its employees at the heart of its strategy and by offering its clients total solutions.

Press contact

Ann Vansumere, Communication Manager Group CFE
+32 2 661 13 97 || ann_vansumere@cf.be